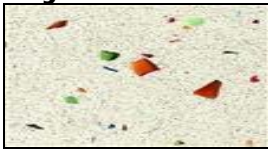


# Epoxy Terrazzo Flooring System [Call it Thin-Set Epoxy Terrazzo]

Applied on Shopping Complex, Commercials, Hospitals, Industrials & Housings  
Decorative Floor, Highly Durability, Flexibility & High Chemical Resistance

Thickness: 7mm for Medium-Duty, 10mm for Heavy-Duty or 12mm for Extremely Heavy-Duty

## Crystal/Glass Chipping System



YQ017C



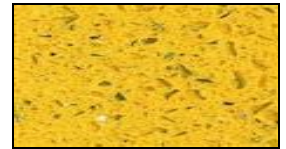
YQ016C



YQ009D

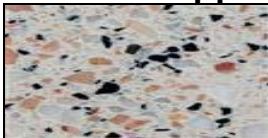


YQ011C



YQ008X

## Marble Chipping System



BM0889



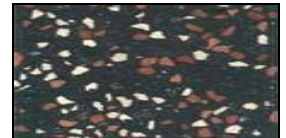
BM0887



BM0941

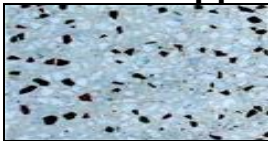


BM0839



BM0838

## Classic Chipping System



T0915



T0914



T0910

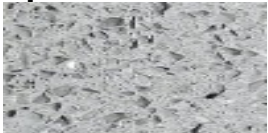


T0909



T0908

## Special Grade of Chipping



### Description & Uses

**Terrazzo Floor Epo** is Epoxy Terrazzo is a colored solvent-free epoxy resin binder formulated to be filled with fine mineral and coarse decorative aggregates (modified color cement, natural chipping or marble dust and marble chips). This system offers custom and versatile design options, while providing a seamless finish with excellent wear resistance.

Trowel applied at actual 7-12 mm thick, this system is designed for interior use on concrete, plywood or steel substrates. Epoxy Terrazzo is ideal for new or renovation work because it is thin and quickly installed. Conforms to NTMA for epoxy terrazzo.

### Epoxy Terrazzo is available in 4 versions:

- Improved version for easier workability and faster installation.
- Original formulation with flow able properties.
- Designed for vertical applications or covered bases
- Thixotropic version.

- Characteristic**
1. Seamless, waterproof and easy to clean and maintain.
  2. Unmatched design versatility.
  3. Exceptional durability and abrasion resistance.
  4. Lightweight
  5. Very low life cycle costs compared to other floor finishes.
  6. Thin set for easy jointing with adjacent floor finishes.

### **Application Instructions**

#### **Surface Preparation**

Please refer to our **Method Installation** details, Substrate must be sound, dry and free of all contaminants.

Concrete: Clean mechanically or acid etch, depending on conditions.  
Metal: Sandblast.  
Wood: Sound and clean

#### **Suggested Field Mix**

Part A: 4.06 kg  
Part B: 2.02 kg  
Part C: 25.92 kg  
Packaging: 32.00 kg pack

#### **Application**

Mix parts A and B separately. Then mix mechanically parts A and B in the recommended ratio. Add part C, modified color cement or marble dust or chips and mix thoroughly. Apply onto substrate. Allow terrazzo to cure 24 hours, then initiate grinding operation. Seal surface with polymer sealer for improved chemical resistance.

### **Technical Information**

Color: As per TTMAC color plate or custom colored.

Solids content: Per volume 100%

Density: 2.15 – 2.25 kg/cm<sup>3</sup>

Pot life: 20-25 min, at 25°C (70°F) unfilled  
25-30 min, at 25°C (70°F) with filled

Application Method: Steel trowel & Special Tools

Thickness Coverage: **7mm** [Allow 2-3mm grinding] – 22.00 kg/m<sup>2</sup>  
**10mm**[Allow 2-3mm grinding] – 28.60 kg/m<sup>2</sup>  
**12mm**[Allow 2-3mm grinding] – 33.00 kg/m<sup>2</sup>

Recoat: 24 hours

Curing time: Full cure 7 days, At 21°C (70°)

Top coat: Improved chemical resistance

Shelf life: 1 year in original unopened container

#### **Precautions**

1. Consult Material Safety Data Sheet prior to use.
2. Do not apply material at temperatures below 13°C (55°F)

**LaMaCo-Terrazzo Floor Epo # All Grade of Epoxy Terrazzo System**

**Cured System Physical Properties**

Properties	Test Methods	Test Require	Result
Compressive strength	ASTM C 579	5-6 mm/minute	94.7 MPa (13,732 psi)
Tensile strength	ASTM C 307	5-6 mm/minute	12.9 MPa (1,875 psi)
Flexural strength	ASTM C 580	22.8 cm (9") at 3.4 mm/minute	26.1 MPa (3,785 psi)
Modulus of elasticity in flexion	ASTM C 580	22.8 cm (9") at 3.4 mm/minute	6,652 MPa (964,540 psi)
Bond Strength	ASTM D 4541	On concrete	> 1.6 MPa (> 230 psi)
Impact resistance	ASTM D 3029	Top coat On concrete Matrix coat On concrete	5.3 J (47.3 in•lbs) 12.6 J (111.5in•lbs)
Hardness (Durometer) Shore D	ASTM S 2240		74
Indentation and Residual resistance	CSA A 126.1	After 1 minute at 23°C After 10 minutes at 23°C	0.045mm 0.050mm
Toxicity			Approved
Water vapour transmission and permeance	ASTM E 96	Water procedure B at 23°C	0.10 g/h•m2 15.4 metric perms (0.27 perm)
Freeze – thaw resistance	ASTM C 67	Section 8, 50 cycles	Passes
Indentation and Residual resistance	CSA A 126.1	After 1 minute at 23°C After 10 minutes at 23°C	0.045mm 0.050mm
Abrasion resistance	ASTM D 4060	<b>CS-17 Wheels @1000</b> g/wheel – 1000 revolutions <b>H-22 Wheels @1000</b> g/wheel - 1000 revolutions	109 mg loss  0.08 mm (3mils) groove 163 mg loss *
Water permeability and absorption	ASTM D 570	24 hrs immersion at 23°C 7 days immersion at 23°C 2 hrs immersion in boiling water	0.10 % 0.19 % 0.33 %

**Control Joints** Isolation/Expansion and Other Joints Subject to Movement

All expansion joints must be honored through the flooring system. For information pertaining to the above, consult Manufacturer’s publication, Concrete 105.

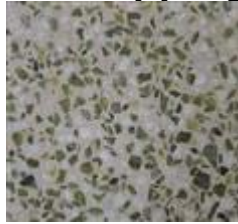
Guide of commonly used **L-types Divider Strip** for **Thin-set Epoxy Terrazzo Flooring** System

Control Joint or Expansion Joint L-types Divider Strip	Strip High	Strip Width/Thickness
Copper, Brass or Aluminium L-type Divider Strip	<b>9mm</b>	<b>4mm or 6mm or 9mm</b>
Copper, Brass or Aluminium L-type Divider Strip	<b>11mm</b>	<b>4mm or 6mm or 9mm</b>
Copper, Brass or Aluminium L-type Divider Strip	<b>13mm</b>	<b>4mm or 6mm or 9mm</b>

**Classic Grade of Chipping Stone**



T0915



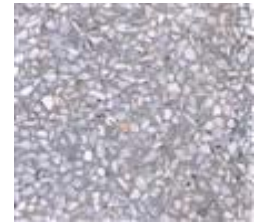
T0914



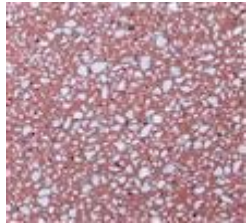
T0910



T0909



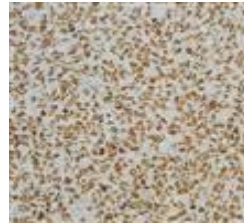
T0908



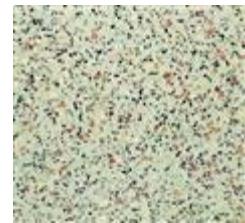
T0904



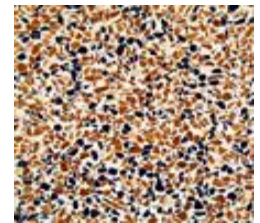
T0903



T0902



T0913



T0911



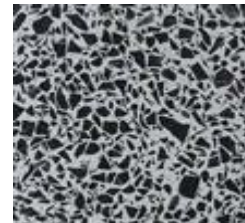
T0906



T0905



T0901

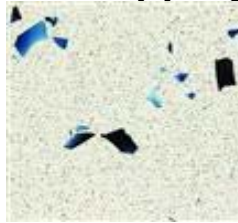


T0907

**Crystal Grade of Chipping**



YQ017C



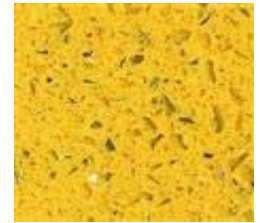
YQ016C



YQ009D



YQ011C



YQ008X



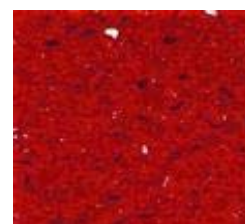
YQ008D



YQ004K



YQ002K



YQ006



YQ004C



YQ0950



YQ0943



YQ0947

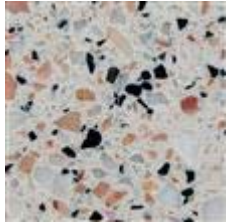


YQ014D



YQ003D

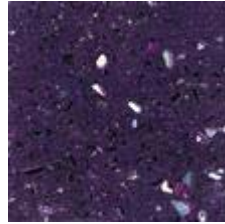
**Marble Grade of Chipping**



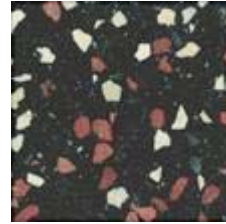
BM0889



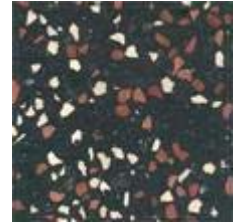
BM0887



BM0941

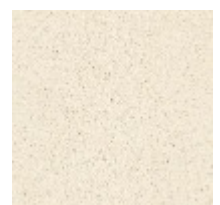
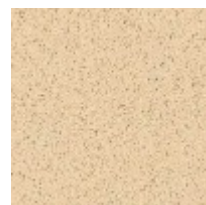
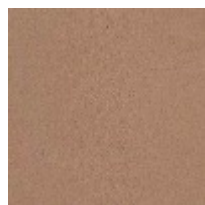
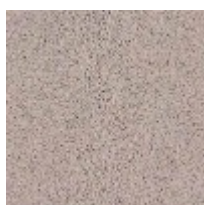
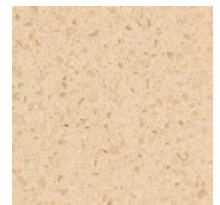
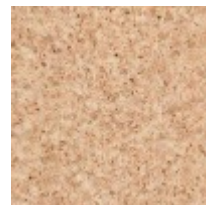
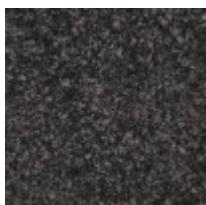
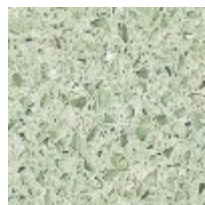
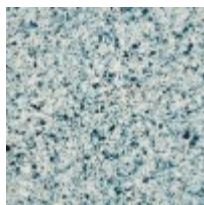
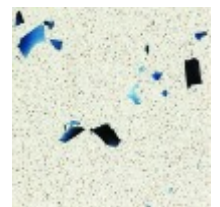
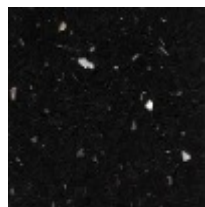
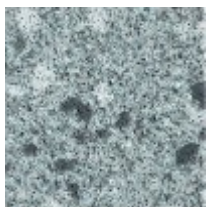
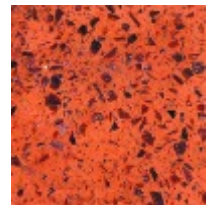
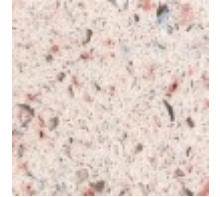
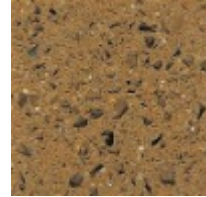
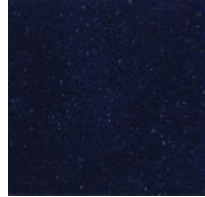
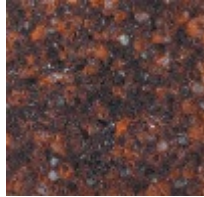


BM0839



BM0838

**Special Grade of Chipping**



**LaMaCo System Sdn Bhd**

407, Jalan Perusahaan 6, Taman Bandar Baru Mergong,  
05150 Alor Setar, Kedah, Malaysia.

Tel : +60-4-771 1111 Fax : +60-4-772 4444

Http : [www.lamaco.com](http://www.lamaco.com)

Email : [info@lamaco.com](mailto:info@lamaco.com)

- Important 1:** While the information and data sheet contained in this promotional literature are presented in good faith and believed to be reliable, they do not constitute a part of our terms and conditions of sales unless specifically incorporated in our Order acknowledgement. Nothing herein shall be deemed to constitute a warranty, express or implied, that said information or data sheet are correct or that the products described are merchantable or fit for a particular purpose, or that said information, data sheet or products can be used without infringing patent of third parties.
- Important 2:** **LaMaCo Malaysia** products are not guaranteed against defective materials and manufacture & are sold subject to its standard Terms & Conditions of sale, copies of which may be obtained on request. Whilst **LaMaCo Malaysia** endeavors to ensure that any advice, recommendation, specification or information is accurate and correct, it cannot- because it has no direct or continuous control over where or how its products are applied – accept any liability either directly or indirectly arising from the use of its products, whether or not in accordance any advice, specification, recommendation or information given by it.
- Health & Safety** Some of the components of this product may be hazardous during mixing and application. Please consult the relevant Health & Safety Data Sheets, available from **LaMaCo Malaysia** on request and sent with each delivery.